

# My Day, My Space

**Diana Bannister MBE**

University of Wolverhampton, UK

Institute of Education

@DianaBannister

DianaBannister@wlv.ac.uk



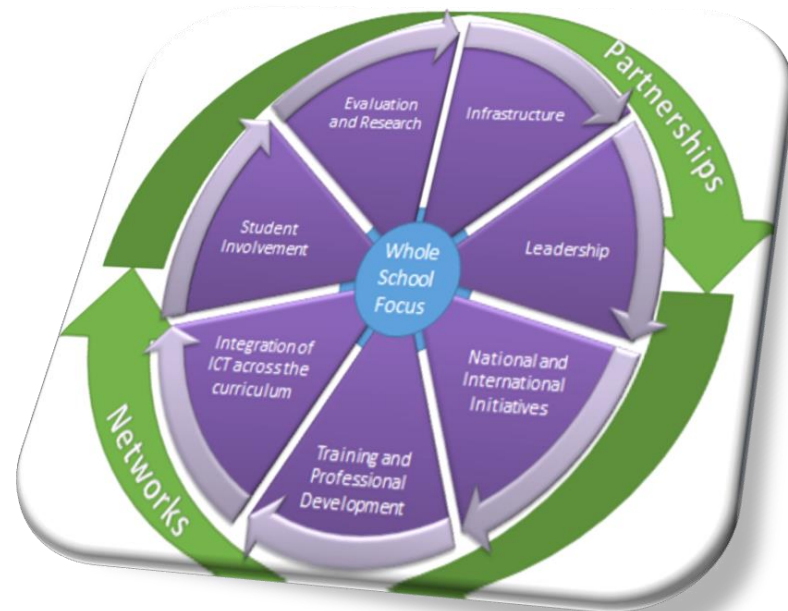
# Developing Guidelines for Exploring and Adapting Learning Spaces

## **WHAT HAVE WE LEARNED SO FAR?**



# Living Schools Lab Project 2012-2014

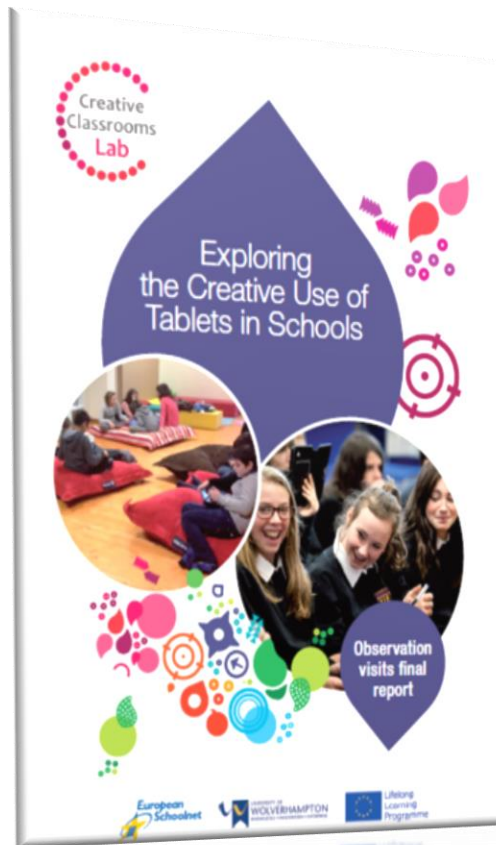
## - Mainstreaming Change in Schools



<http://isl.eun.org/observation>



# Creative Classrooms Lab Project



<http://creative.eun.org>



# Learning Spaces Spectrum

Status Quo

Transformation



How can we adapt existing learning spaces?

What resources  
should a  
standard  
classroom  
have?

Diana Bannister, CCL Project



**How flexible and adaptable are our teaching and learning spaces?**

Diana Bannister, CCL Project

# What changes need to be made to the whole curriculum to enable students to learn differently?



Diana Bannister, LSL Project





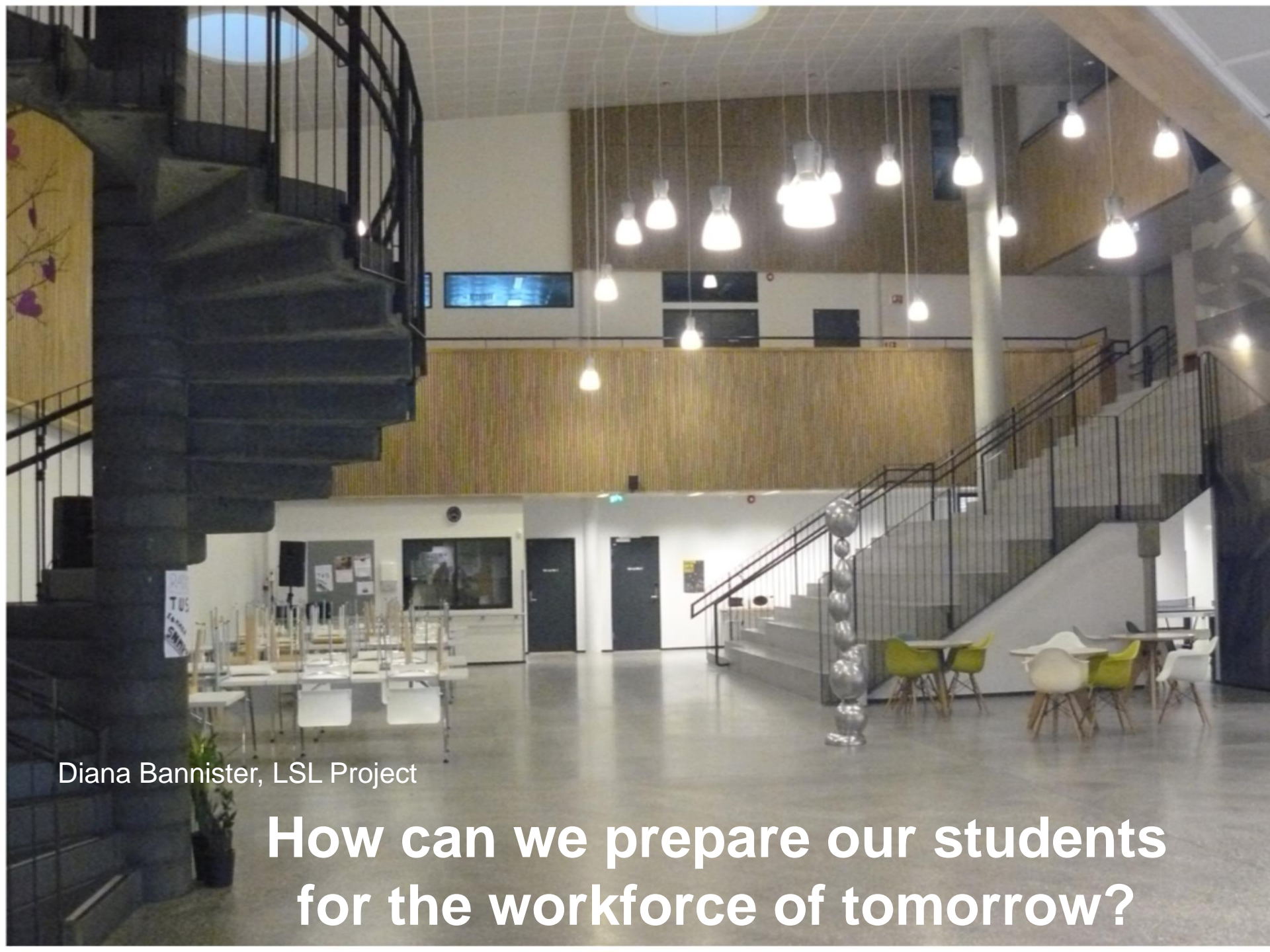
**How do we use outdoor spaces for learning and teaching?**

Diana Bannister, LSL Project



**Are there any spaces in school  
that could be used differently?**

Diana Bannister, LSL Project



Diana Bannister, LSL Project

**How can we prepare our students  
for the workforce of tomorrow?**



What would you keep in your classroom?  
What should you take away?



- No mobiles
- No hats
- No food and drink
- No chewing gum



## Methodology

- Eight countries have been identified through European Schoolnet (AT, CH, CZ, EE, IE, IT, NO, PT )
- Semi-structured interviews with the Ministries of Education/ICT Agencies
- Online focus groups with school leaders
- Semi-structured interviews with lead teachers from the countries involved
- Case Studies





# Exploring and Adapting Learning Spaces

## One Classroom

- Pockets of Practice
- Where do I begin?
- We have no money
- I'm doing it on my own
- I've seen something I can copy
- I didn't think of that
- There is no space to change
- This is what works and why

## Whole School

- Replicable strategy
- What are we trying to achieve?
- How is this sustainable?
- We are working on this together.
- How can we address the learning needs of our students?
- Who is leading the way?
- We have identified evidence and an appropriate plan.





# Guidelines for Exploring and Adapting Learning Spaces

**Due for Publication: April 2017**



# Developing Active Learners

- Enabling schools to identify students to provide feedback on their learning spaces
- If you asked a student to share just one day...what would they tell you?



# Active Learning is when you...

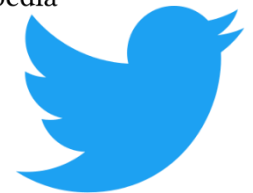




Google



WIKIPEDIA  
The Free Encyclopedia





How do students know their individual progress? Diana Bannister, CCL Project



# ISTE Report 2015:

## Reimagining Learning Spaces for Student Success

- What are your three goals? (p.5)
- How are schools in your community preparing students for the demands of the modern workplace? (p.10)
- Checklist to assess your readiness for active learning (p.28)
- Observe classroom rituals (p.64)
- Design Thinking – Stanford University (p.69-70)
  - Empathise – Define – Ideate – Prototype- Test
- ISTE Standards for Teachers (p.76)
  - Facilitate – Design - Develop – Model – Promote - Engage



# Learning Spaces Spectrum

Status Quo

Transformation

What will success look like?



How can we adapt existing learning spaces?

**communication**

**BYOD**

**active**

**flexibility**

**mobility**

**learning**

**creativity**

**collaboration**

**reflection**

**personalising learning**

**adaptability**



# Learning Spaces Spectrum

Status Quo

Transformation



How can we adapt existing learning spaces?

- Space
- Technology
- Pedagogy

Ownership  
and  
Responsibility





**THE UNIVERSITY OF OPPORTUNITY**

**Keep in touch:**

**Diana Bannister MBE**

**Assistant Director of Pedagogic Partnerships**

**Head of Postgraduate Taught Provision**

**University of Wolverhampton**

**[DianaBannister@wlv.ac.uk](mailto:DianaBannister@wlv.ac.uk)**

**[@DianaBannister](#)**